

Aqara

Online Support: <https://store-support.aqara.com/products/light-switch-h2-eu/>

Regarding Dual Protocol (Thread/Zigbee) Switching

Q:How to switch from Thread protocol to Zigbee protocol?

A:

- 1.Install the Aqara Home app, and enable Wi-Fi and Bluetooth.
- 2.Reset the device to factory settings (press any button 10 times continuously) to enter network setup (first-time device adding will automatically enter networking), which shows slow-blinking indicator.
- 3.In the Aqara Home app, tap Add Accessory, scan the Matter code on the button, select Zigbee under Switch Protocol page. Proceed following the app's instruction.

Q:How to switch from Thread protocol to Zigbee protocol?

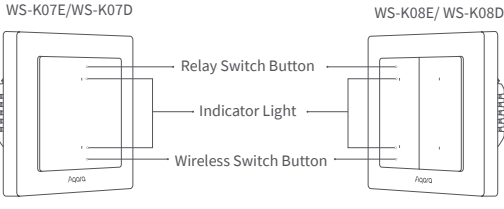
A:

- 1.Install the Aqara Home app, and enable Wi-Fi and Bluetooth.
- 2.Reset the device to factory settings (press any button 10 times continuously) to enter network setup (first-time device adding will automatically enter networking), which shows slow-blinking indicator.
- 3.In the Aqara Home app, tap Add Accessory, scan the Matter code on the button, select Zigbee under Switch Protocol page. Proceed following the app's instruction.

Product Introduction

Aqara Smart Wall Switch H2 EU is a smart switch based on Thread/Zigbee wireless communication protocol that can control the power supply of devices such as lights. When used with a hub, it allows for remote control via the app, scheduling, power monitoring, power statistics, and other functions. Additionally, it can be used with other smart devices to achieve various interconnected control effects.

*This product needs to be used with a device that has Matter Border Router function.



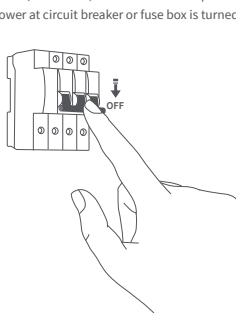
Warnings

1. This product is not a toy. Please keep children away from this product.
2. This product is designed for indoor use only.
3. Do not use in humid environments or outdoors.
4. Beware of moisture. Do not spill water or other liquids onto the product.
5. Do not place this product near a heat source. Do not place it in an enclosure unless there is normal ventilation. Do not attempt to repair this product by yourself. All repairs should be performed by an authorized professional.
6. This product is suitable for improving the quality of your home life and reminding you about the device status. If a user violates the product use instructions, the manufacturer will not be liable for any risks and property losses.

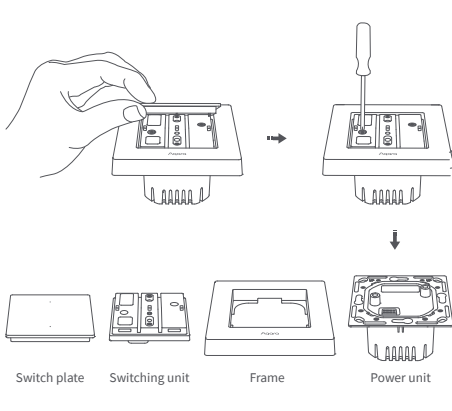
Installation Method

*The picture shows the (2 Buttons, 1 Channel) version as an example

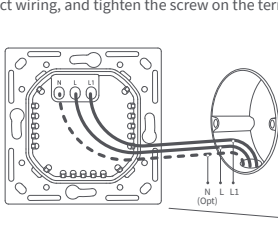
*Please make sure that the power at circuit breaker or fuse box is turned off before wiring!



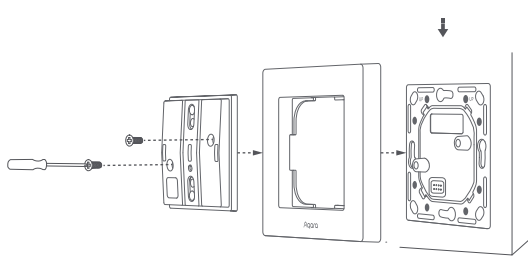
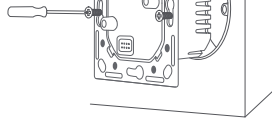
1. Disassemble the switch into: switch plate, switching unit, switch frame, and power unit.



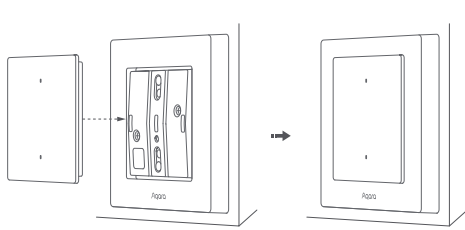
2. Use a screwdriver to loosen the screws on the terminals, connect the live wire to the L hole, connect the neutral wire to the N hole (depending on whether there is a neutral wire in the household wiring), connect the load (light) wire to the L1 hole, confirm the correct wiring, and tighten the screw on the terminal.



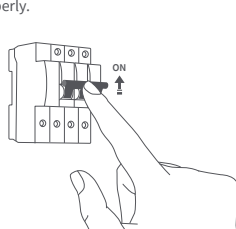
3. Mount the power unit of the switch to the wall junction box with the attached screws and mount the switch frame. Align the pins of the switching unit with the power unit, and snap them together, then use provided screws to securely fasten them in place.



4. Attach the switch plate to the switching unit.



5. Turn on main power at the circuit breaker, and test the switch by pressing the button. If the wired light can be controlled normally by the upper button, the switch is working properly.



Quick Setup

To use the device with a particular Matter ecosystem (Thread Mode), a Matter Controller of this ecosystem and a Thread Border Router are required.

1. Double-press any button, then press and hold it for 5 seconds until the blue indicator light starts blinking. This indicates that the device is in networking mode.

2. Open the app that supports Matter, scan the Matter code on the manual or product, or enter the setup code to add the device to the app.

3. Proceed following the app's instruction.

To use the device in Aqara Home (Thread Mode), an Aqara Hub with border router function (for example, Hub M3) is required:

1. Double-press any button, then press and hold it for 5 seconds until the blue indicator light starts blinking. This indicates that the device is in networking mode.

2. In the Aqara Home app, tap Add Accessory, choose light switch H2 EU. Scan the Matter code on the manual or product or enter the setup code to add the device to the app. Select Thread under Switch Protocol page.

3. Proceed following the app's instruction.

To use the device in Aqara Home (Zigbee Mode), an Aqara Zigbee Hub is required:

1. Double-press any button, then press and hold it for 5 seconds until the blue indicator light starts blinking. This indicates that the device is in networking mode.

2. In the Aqara Home app, tap Add Accessory, keep the phone close to the device, and light switch H2 EU will show in the app's discovery section (at the top left). Tap the icon and select Zigbee under Switch Protocol page.

3. Proceed following the app's instruction.

Button Operations

Single press once: Turn On/Off

Double press, then press and hold for 5 seconds within 3 seconds: Reset the Device/Enable Pairing

Press any button 10 times continuously: Restore to factory settings

Indicator Light Description

Indicator light status	Description
Blue indicator light flashes quickly 3 times	Device powered on
Blue indicator light flashes slowly	Networkable status
Blue indicator light flashes quickly	Pairing in progress/device finding (Thread protocol)
Blue indicator light stays on for 1s	Pairing successful
Red indicator light stays on	Device offline
Red indicator light flashes slowly 3 times	Device voltage is unstable, please replace with a higher power load lamp
Purple indicator light flashes quickly	Device finding (Zigbee protocol)

Product Specifications

Product Name	Light Switch H2 EU (2 Buttons, 1 Channel)	Light Switch H2 EU (4 Buttons, 2 Channels)
Model	WS-K07E/WS-K07D	WS-K08E/WS-K08D
Wireless Protocols	Thread, Bluetooth, Zigbee	
Dimensions	86 × 86 × 45mm	
Electrical Rating	200-240 VAC, 50/60 Hz, Max 8 A (Resistive Load), μ	
Minimum Power	5 W (No Neutral), Unlimited (With Neutral), general purpose	
Thread Operation Frequency	2405 - 2480 MHz	
Thread Maximum Output Power	≤ 13 dBm	
Bluetooth Operation Frequency	2402 - 2480 MHz	
Bluetooth Maximum Output Power	≤ 13 dBm	
Operating Temperature	0°C - 40°C (32°F - 104°F)	
Operating Humidity	0 - 95% RH, no condensation	
What is in the Box	Light Switch H2 EU × 1, User Manual × 1, Screw Kit × 1	